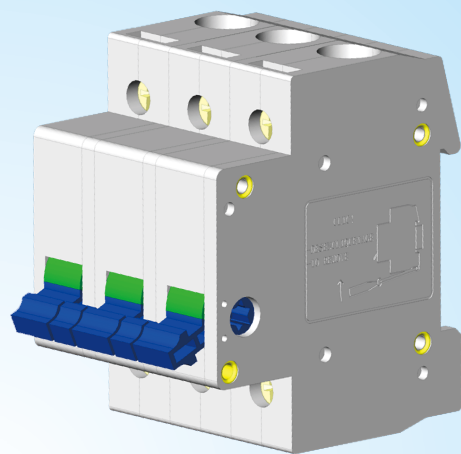


GSG1-100系列隔离开关

GSG1-100 Series Separated Switch

安全 智能 环保



CE UL CCC TÜV CB RoHS
ISO9001 ISO14001 OHSAS18001

用途 APPLICATION

GSG1-100系列隔离开关(以下简称隔离开关)主要用在配电网中作为电源的总开关,带负载分断和接通线路。在合闸状态下,隔离开关能可靠地通过正常的工作电流和在规定的时间内承载规定的故障电流,以保证用电的持续性;而在分闸状态下,其有可靠的绝缘间隙,使用电设备和线路与电源隔离,以保证用电设备免受过电压损害和保障检修工作的安全。

GSG1-100 series separated switch (shortened form separated switch) mainly use in the electricity-distribution networks as the master switch of the power supply to break or make the circuits with loads. When it in switching-on status, it can take the normal working current as well as the specified faulty current within the specified time to ensure the power continuousness of the networks and circuits; while it is in the switching-off status, it can provide the reliable insulating gap to make the electricity-consumer equipment as well as the circuit to be isolated with the power supply and to prevent the electricity-consumer equipments from being damaged due to the over voltage and also ensure the safety maintenance working for the electricity-consumer equipment.

结构特点 STRUCTURAL FEATURES

■ 产品符合IEC60947-3, GB14048.3等标准。

Products accord with the IEC60947-3, GB14048.3 substances

■ 通过CCC认证,CE认证。

Through the CCC certification, the EU CE safety certification

型号及含义 TYPE AND MEANING



主要性能参数(见表1) MAIN TECHNICAL PARAMETERS (see table 1)

GSG1-100系列隔离开关的主要性能参数

GSG1-100 range separated switch main technical parameters

表(table)1

项目 Item	参数 Parameters	备注 Note
型号 type	GSG1-100	
使用类别 Usage classification	AC-22A	
额定绝缘电压 Rated Insulation voltage	415V	
额定工作电压 Rated operating voltage	240/415V	
频率 Frequency	50/60HZ	
约定发热电流 Convention thermal current	100A	
额定工作电流 Rated operating current	32A、63A、100A	
极数 Pole	1、2、3、4极	
额定冲击耐受电压 Rated Impulse Withstand voltage	6000V	
额定短时耐受电流 Short-time with stand current	20Ie	耐受时间1s Time tolerance1s

额定短路接通能力 Rated short-circuit the ability to connect	30Ie	通电时间 ≥ 0.1s Making time ≥ 0.1s
额定接通能力 Rated ability to connect	3Ie	
额定分断能力 Breaking capacity of rated limit short-circuit	3Ie	
有载操作次数 The number of on-load operation	2000次	
空载操作次数 The number of no-load operation	10000次	
接线能力 wiring capacity	35mm ²	

正常工作条件与安装条件 WORKING CONDITION AND INSTALLATION CONDITION

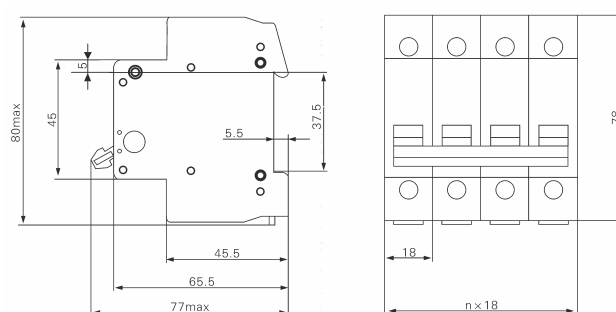
■ 正常工作条件 Normal working condition

- △ 周围空气温度上限为+40℃，下限为-5℃，24h内的平均值不超过+35℃；
Environment temperature : -5℃ ~ +40℃, the average hours of temperature exceeding +35℃ during 24 hours.
- △ 安装地点的海拔不超过2000m; Elevation: ≤2000m
- △ 安装地点的空气相对湿度在最高温度为+40℃时不超过50%，在较低温度下允许有较大的相对湿度，例如20℃时达90%。对由于温度变化偶尔产生的凝露应采取特殊的措施；
No exceeding 50% at the maximum ambient temperature of 40℃.with lower temperature, higher humidity would be permitted, for example ,with temperature 20℃, the humidity can exceed 90%.Take the special measure to the dews on the surface, which would appear due to temperature change.
- △ 污染等级为2; Pollution protection: Grade 2
- △ 安装处应无显著冲击和振动。
Products should be used in no significant impact and vibration place.

■ 安装条件 Installation condition

- △ 安装类别为Ⅱ、Ⅲ（负载、配电水平级）；
Installing categories: ClassⅡ、Ⅲ(the level of over-load and distribution)
- △ 采用TH35-7.5型标准安装导轨安装；
Installing condition: mounted by TH35-7.5 standard rail track.
- △ 隔离开关既可垂直安装，亦可水平安装。
Switches can be mounted vertically, can also be installed on the level of

外形及安装尺寸 OUTLINE AND INSTALLATION DIMENSIONS



注: n为极数,按产品的极数可选1、2、3、4。

Note: n is pole number, poles can collect 1p、2p、3p and 4p

使用说明 OPERATING INSTRUCTION

- △ 接线端子须紧固导线，不允许有松动现象，以使接线端子与导线保持良好的接触；
Terminal Blocks to be fastening wire, there does not allow loose, so that the wires and terminals to maintain good contact;
- △ 本产品为免维护型，不允许用户打开维修。
The product is for maintenance-free type, does not allow users to open repair.

订货须知 ORDER NOTICE

- 用户订货时必须明确隔离开关的型号、规格及数量。
Users need attention the entitle type, character and volume of switch.
- △ 例如：GSG1-100 63A/3P 隔离开关 100台。
Example: GSG1-100 63A/3P switch 100sets.